

Glaro Value Waste Receptacles



TA1537SA

F2037SA

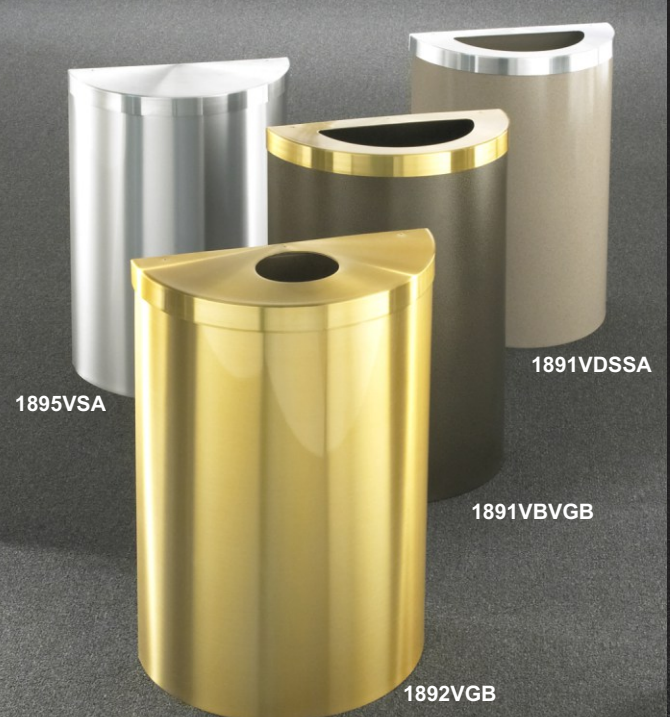
All Satin Aluminum



TA1537GC

F1537BK

Designer Powder Coat Finishes



1895VSA

1891VDSSA

1891VBVGB

1892VGB

Profile Half Round

Waste Receptacles

"Value" Waste Receptacle Collection

Glaro Indoor/Outdoor, Value Waste Receptacles

These durable new indoor/outdoor Glaro Value Waste Receptacles have been designed with both appearance and cost in mind. Waste receptacle covers have an extra wide lip to conceal the poly bag liner, which is fitted over the body for a neat professional appearance. This style reduces both the shipping weight and the cost. Optional plastic inner liner cans are also available. This Value Collection of all metal waste receptacles is finely crafted in the U.S.A. by Glaro Inc.

Finishes (Specify both the finish of the cover and the body separately)

Glaro offers all satin aluminum plus 29 powder coat finishes baked on a galvanized steel body. Rust and tarnish-proof gloss brass and gloss chrome needs less cleaning and never needs polishing. You specify the finish of the hand spun aluminum cover and body. Select from satin aluminum (SA), tarnish-proof satin brass (BE), or a matching powder coated finish (MF). This choice allows you to create a customized look. These finishes coordinate beautifully with all other Glaro products.

Five Value Waste Receptacle Models

Five designs are available: a simple and inexpensive open funnel top, an attractive and stylish self closing tip-action funnel top and three half round models.

Features and Benefits:

- Lower cost
- Specially fitted heavy duty liner bags
- Bags are completely concealed by the covers
- Satin aluminum plus 29 finishes
- Gloss brass and gloss chrome for outdoor use
- 12", 15", and 20" diameter and 18" half round units
- Seven designs
- Indoor/outdoor use

VALUE WASTE RECEPTACLES: EXTRA WIDE LIP ON COVER TO CONCEAL TOP OF POLY BAG

Please note: The individual units do not include an interior liner can.

They have been designed to use the special LB Series snug fitting, heavy gauge clear poly bags listed below.

Item #	Description	Dia. (In.)	Ht. (In.)	Capacity (Gal.)	Actual Wt. (lbs)	Trash Opening	Recommended Optional Poly bags	Optional Plastic Liner Can	Satin Aluminum (SA)	Gloss: Brass (GB) Chrome (GC)	Designer color (*)
S1237	Discontinued										
S1537	Discontinued										
T1237	Discontinued										
T1537	Discontinued										
F1237	Funnel Top	12	30	15	12	7"	LB12	PLC12	•	•	•
F1537	Funnel Top	15	30	23	16	9"	LB15	PLC15	•	•	•
F2037	Funnel Top	20	31	41	28	14"	LB20	PLC20	•	•	•
TA1237	Tip Action Top	12	30	15	12	7"	LB12	PLC12	•	•	•
TA1537	Tip Action Top	15	30	23	16	9"	LB15	PLC15	•	•	•
TA2037	Tip Action Top	20	31	41	28	14"	LB20	PLC20	•	•	•

VALUE HALF ROUND "PROFILE" RECEPTACLES WITH PIANO HINGED LID:

1891V	5½ x 12" Half Round Opening	18	30	16	16		LB15	—	•	•	•
1892V	5½" Round Opening	18	30	16	16		LB15	—	•	•	•
1891V	Hinged Cover, No Opening	18	30	16	16		LB15	—	•	•	•

Item # Dia.(In.) Description

* Specify Body Color and Cover Finish

OPTIONAL PLASTIC INNER LINER CANS

PLC12	Liner for each individual 12" receptacle	•
PLC15	Liner for each individual 15" receptacle	•
PLC20	Liner for each individual 20" receptacle	•

Item # Size of the bag Contents Actual Wt

CLEAR POLY LINER BAGS (2 MIL THICK)

LB12	18.5" x 36"	Case of 100 bags	10	•
LB15	23" x 36"	Case of 100 bags	12	•
LB20	31" x 36"	Case of 100 bags	15	•