



TRASHCANS UNLIMITED

THE BEST TRASH CANS AT THE BEST PRICES

Metro Collection | XL

RC-MTR-34



C-MTR-4 COMBO HCPR



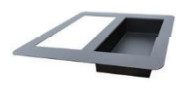
RC-MTR-4 TR HCCL



RC-MTR-4 R



R-MTR-34 A/T HC



One of the most popular and stylish collections, the Metro Collection can be found in thousands of facilities across the country! Functional, classic design combined with its versatility meets the needs of any facility.

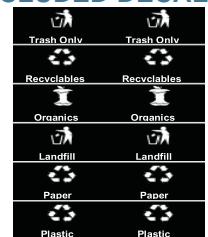
FEATURES & BENEFITS

- Extra large 34 gallon Recycling Receptacle, available in 3 finishes
- Choose from: Combo, Trash Only, Recycle Only, or Ash Tray/Trash
- Elegant tapered body complements any décor, traditional or contemporary
- Constructed of fire safe steel. The liner base resin meets UL94 flammability standard
- Four heavy-duty feet keep the units slightly elevated to allow for air circulation, and to help restrict mold/mildew growth and unsightly discoloration of floor surfaces from “mop around” rings
- Each unit includes a removable LLDPE liner with lift handles and bag retention notches.
- RC-MTR-34 COMBO features two rigid 17 gallon plastic black liners and divided lid to allow for sorting of Trash & Recyclables at a single collection point
- Additional white on black decals for individual waste streams are included for lid application, if desired
- Contains over 30% recycled materials (over 60% for Stainless Steel) and is 100% post-consumer recyclable
- Contains over 30% recycled materials (over 60% for Stainless Steel) and is 100% post-consumer recyclable
- Made in the USA

TRIM & BODY FINISHES

T	BODY
Black Matte (BLX)	Stainless Steel (SS)
Sunburst Gold (SBG)	Hammered Copper (HCPR)
Platinum (PLTNM)	Hammered Charcoal (HCCL)

INCLUDED DECALS



RC-MTR-34	
34	Gallons
18.5"	Length
18.5"	Depth
35.5"	Height
64	Weight (lbs)
Ships on Pallet	

OVER

30%

OVER 60%
Only Stainless Steel

