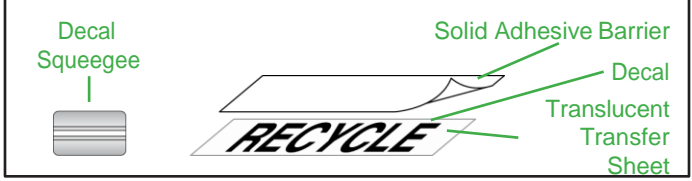
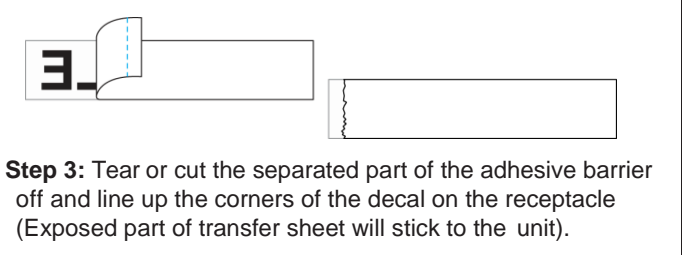
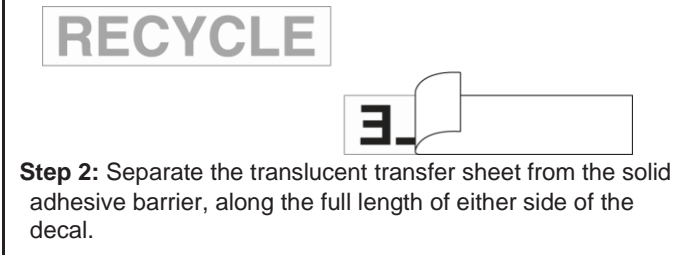


EX-CELL KAISER

MANUFACTURING & DESIGN

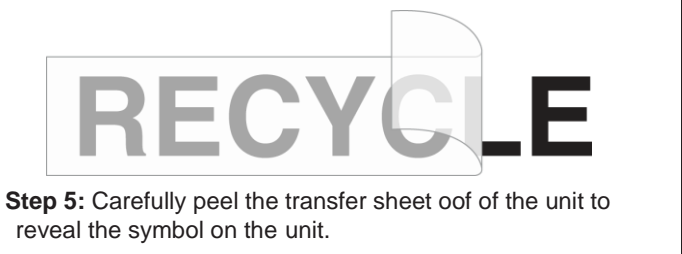
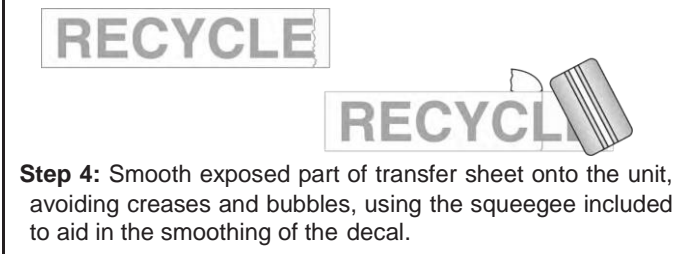


Step 1: Lay receptacle on a clean area, with the side to be marked facing outward and decide where you would like to put you decal



Step 2: Separate the translucent transfer sheet from the solid adhesive barrier, along the full length of either side of the decal.

Step 3: Tear or cut the separated part of the adhesive barrier off and line up the corners of the decal on the receptacle (Exposed part of transfer sheet will stick to the unit).



Step 4: Smooth exposed part of transfer sheet onto the unit, avoiding creases and bubbles, using the squeegee included to aid in the smoothing of the decal.

Step 5: Carefully peel the transfer sheet oof of the unit to reveal the symbol on the unit.

ALL RIGHTS TO DESIGN AND/OR INVENTION ARE RESERVED BY EX-CELL KAISER LLC

